

## Wanaasi, Bakikhoolo Ni Tsikweena

Author - Ghanaian folktale  
Translation - Milton Eridad Shissa  
Illustration - Wiehan de Jager  
Language - Lumasaaba  
Level - Longer paragraphs

© African Storybook Initiative 2014  
Creative Commons: Attribution 4.0  
Source [www.africanstorybook.org](http://www.africanstorybook.org)



## Wanaasi, Bakikhoolo Ni Tsikweena

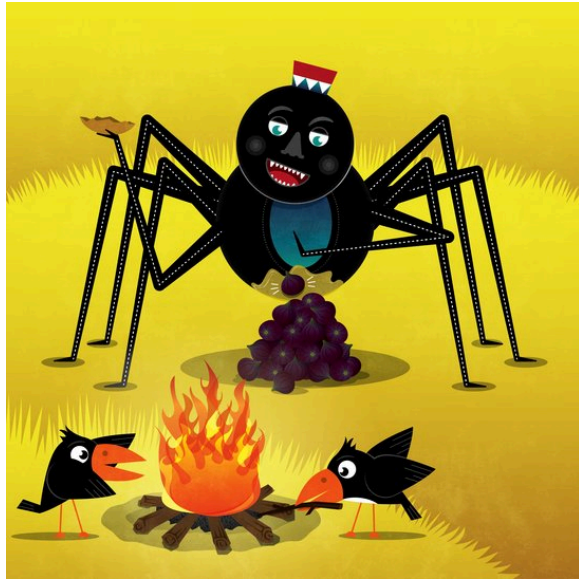
Milton Eridad Shissa

Wiehan de Jager





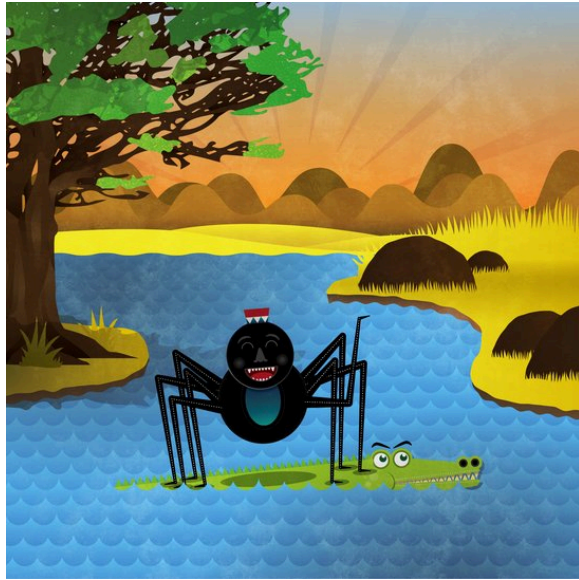
Aabawo lutweela, yabawo intsala ngali khu shibala. Mbaawo uwabakho ni shakhulya shoosi ta, khuurursakho bakikhoolo. Abe buli kumutikhinyi bakikhoolo bapamburukha ni batsya lukyeendo luleeyi naabi khuutsya khu kusaala kufiigi, kukwabakho ni kimifiigi kimirobe, akari khu luutsi lwe kameetsi. Ndi abe lwanyuma bapamburukha bakobola ni kimifiigi kikibamala babeene ni baalebe baabwe. Buli lweesi Wanaasi aabonelakho khu mifiigi kimikali ikyo, abe atsutsukhaka busa luure. Abe anyala aryeena khukhwifunilayo kimifiigi anyale khuulya.



Isho shaakila akhala kamakyesi.  
Waakhakakho naabi weyakha  
buwuule bwe ntsukhi  
bubuwaambikhaka khu meekhalilo  
keewe. Lwanyuma waasuta luutsyo,  
waatsya khuubonakho bakikhoolo.  
Wanaasi waabaloomba ari,  
"Naabekoontseleele, munyala  
mwanjeetakho? Ingana khuufunakho  
lilyaanda lye kumulilo, intsye niyeetise  
khukhwaasa kumulilo."



Sheesi khumanyile shili ndi, ikweena  
ishiliinda Wanaasi akobole,  
musaambo isi isuta kamoolu kaayo  
mu ngaaki, ni tsimoni tsayo  
tsitsafwaanana ni matoongo khu  
ngaaki khwe kameetsi.



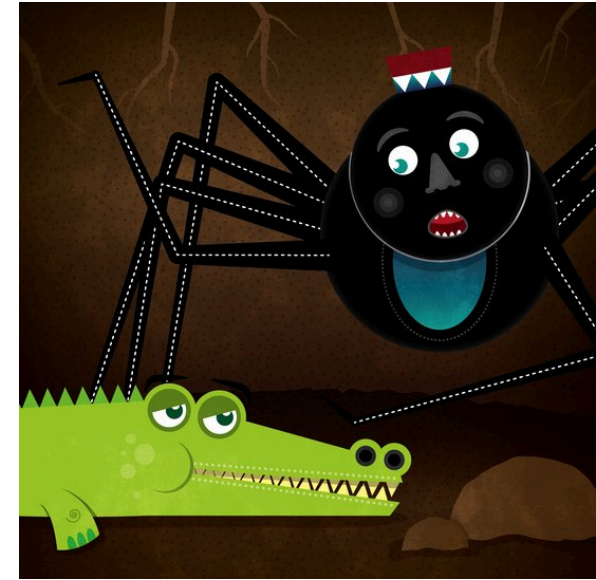
Nga ikweena sikanakho bakinyusa nga antsy e aashiili ta. Ne Wanaasi wekoontselela ari, "N'unjeetekho! Iwe usubaka khaangu mu meetsi khukhufuura ise." Ikweena yaafukiilila, Wanaasi wekaama khu ngaaki khwe kamoolu ke kweena, wekyeesela ukhwo, khukhwoola shanjelekha we luluutsi. Nga boolileyo, Wanaasi waasuna khaangu naabi. Kila alomela ikweena ari, "Indi khuutsya, intsy a khukobola khaangu naabi! Ukharurawo ta." Wanaasi wakyeendaka, waakooraanila mu bunyaasi.



Baakikhoolo ni baaba nga balikho bamubukulila kumulilo, Wanaasi waatsya mboola wekhala khu lituunda lye kufigi litweela lilifuurisayo buboofu, nio linyale khukhwihaamba khu meekhalilo keewe. Aryo wasiima bakikhoolo lwe kumulilo, waayubakilisia khaangu khuukobolayo ingo alye lituunda lye kufigi. Ne lituunda lye kufigi litweela ilyo abe silimumala ta. Shaakila weelayo kumuluundi kwe khaabili, waakhola shishiindu nisho shitweela. Ne ni elayo kumuluundi kukukhola khataru, bakikhoolo baarakikha khukhwambaasilisa bari iliwo ilomo. Kila bamureeba bari, "Lwashiina



Kumutikhinyi kukweelakho nga antsy e akhosa, buli kikhoolo waawakho Wanaasi lilyooya litweela. Kila apamburukha ni nabo baatsya khu kusaala kufigi, kukwaba akari khu luutsi lwe kameetsi. Ne Wanaasi n'aabona khu matuunda ke kufigi, waakana ari niye ayile koosi lutweela. Nga buli lweesi kikhoolo akhakilakho khuubuta lituunda, Wanaasi ayokesa ari, "Ilyo lili lilyase! Ise niye unyooyile khuulibona!" Aryo waalibuta waalira mu wootswa yeewe. Khu ntsakamo waaba nga waasutile kamatuunda ke kufigi koosi, nga bakikhoolo sibalikho ni khakhaandu khoosi ta.



Kumutikhinyi kukweelakho nga antsy e akhwentsuukha, Wanaasi waasisimusa ndweela khu kweena. Waakilomela ari, "Ingana khuutsya indeere umukyelama wase ni babaana baase babaali shanjelekha we luluutsi, nio banyale khukhunjeetakho khuukanikha luukano lwase. Manya unyala wanjeetakho nga babaramile bashikona?"



Tsikweena tsaamulomela bari, "Ari khwaamanyile nga uli mutweela khuusiifwe." Tsiryo tsaafukiilisa Wanaasi khuutsya akonekho mwilowo lyaabwe atweela ni natso mu shilo. Ne ni baaba nga balikho bawungukhila, Wanaasi waabalomela ari, "Kumukaamba ise ikhaababoolele luukano luluwaamba khu bulamu bwase lwoosi."



Kila kikhoolo ufuurayo bukhulu aloma ari, "Ari khwaamanyile buelayi khuri uli wanakhamuuna! Mu lirima liikali, bakikhoolo baakhuulaka khu Wanaasi kamooya kaabwe koosi, baapamburukha baatsya. Wanaasi waarama yenyene, nga antsyee aaba nga abukabukana. Kila elomela umweene ari, "Ise niimba nga naakhukana khuurama khu kusaala kuno buulamu bwase bwoosi ta, kane nisute mu ngaaki nga bakikhoolo ni bakhola." Aryo waheela kumuukha luukali lweene, lwanyuma wesuta wemwaata mu ngaaki! Waatsya waakwa mu luutsi lwe kameetsi khukari isi tsikweena tsibusanila."



Ikweena ndweela yenyusa likono yaaloma ari, "Indi shiina shino sheesi khuli nasho? Khwaafunile wamuliintsi we khuukusula nyamu! Nyamu! Kila Wanaasi aloma ari, "Naabekoontseleele mukhaakhola ise muryo ta!" Waarakikha khuulila kamasika. Waabelootsela ari, "Ise indi mutweela khusiinywe, abe mushiili khushimanya ta? Ise nakoraana mu biseela bye bakuuka beenywe, yaataambawo ukhakakho khukhumeentsa ta. Inywe muli baalebe baase babanyoowela ilala beesi naakanaane!" Aryo kila alila kamasika luukali lweene, shaakila tsikweena tsimusaasila naabi."



Ne ikweena ifuurayo busakhulu yaaloma ari, "Ifwe kane khumanye khuri uli mutweela khusiifwe, iwe n'ukane ulye luundi unywe supu we lutuumbi nga ifwe ni khunywa." Kila tsiwaambisa Wanaasi inyuungu ilimo kameetsi kakatuumbukhile. Wanaasi waaloma ari, "Kane ikhole nga kuukhu wase n'akholatsaka." Aryo waatakulaka aasi ni shikyele sheewe she nyuma waayaba liilowo, waarundura kumwaanya aasi e nyuungu. Ne n'aaba nga ekholisa nga unywa supu, kameetsi kaaba nga katsutsukhakila mu mwaanya, kaweela aasi mwilowo lilyaba aasi e bikyele byeewe. Wanaasi wesamuuna