

Imbusi Ishina

Author - Folktale

Translation - Milton Eridad Shissa

Illustration - José Nhambo

Language - Lumasaaba

Level - First sentences

© Mozambican Writers 2014

Creative Commons: Attribution 4.0

Source www.africanstorybook.org

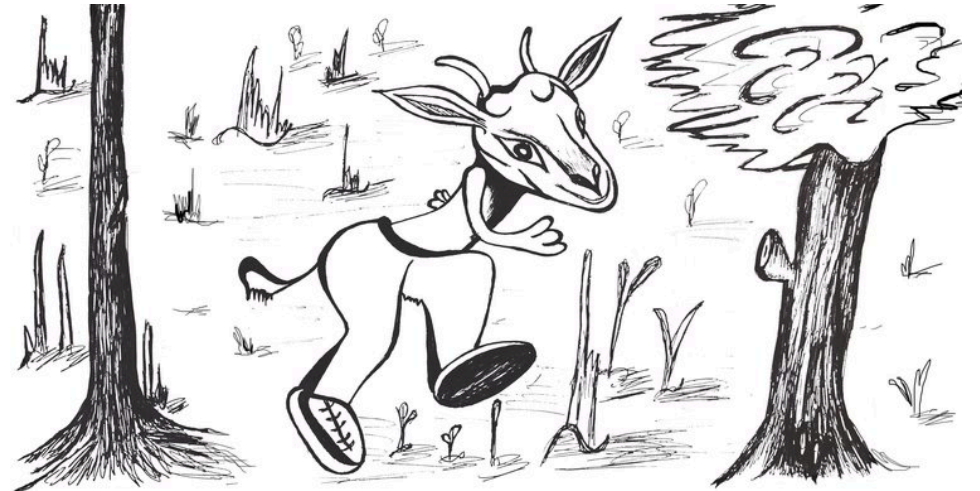
ASb
approved



Imbusi Ishina

Milton Eridad Shissa

José Nhambo



Yabawo lutweela,
imbusi yaakyeenda
yoola mu shitsakha,
yaaba nga ikyeendaana
nga yasaangalile naabi.
Ne yakelawo
yakoraana.



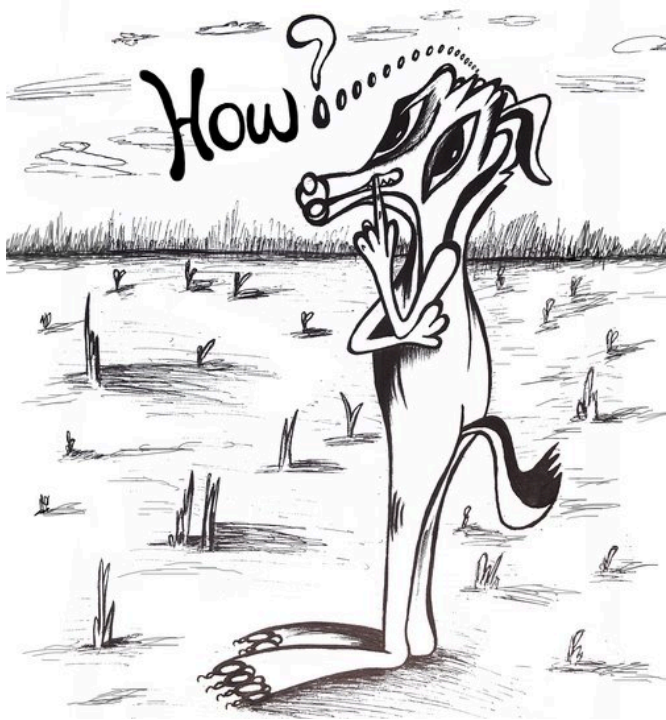
Lubaluba, yaakanana
khatsuutse. Kila
khatsuutse kheetsa isi
imbusi, ne nga
khabonekha nga intsala
yaakhaliile naabi.



Ne imbusi niyo
yeloosela nga ishina,
lwekhuuba yaba
yaamanyile iri
yaawonile khuulibwa ni
khatsuutse!



Kila imbusi iloma iri:
Musakhulu khatsuutse,
ise naamanyile ndi
ukana khuundya. Ne
ngana ifwe nga ndi
musangaafu.



Kila khatsuutse
khareeba imbusi khari,
shiina sheesi umanyisa?
Khuufwa nga uli
musangaafu?
Musaambo shiina?



Ne khatsuutse ni
khaabona khu mbwa
khaarya. Kila
khenyukha khaatikhula
tsindimo khaatsya.



Ne aambikho ni shiifwo
isho, yabawo tsiimbwa.
Natso tseetsa tsibone
shiina shishiitsya mu
moni.



Imbusi yeelamo iri,
siinga imba uwe
khuufwa, ingana ifwe
nga ndi khuushina!



Khatsuutse khaabukula
lituungu lyakho. Kharyo
khekhala aasi
khaarakikha
khuulibuta.



Imbusi nayo yaarakikha
khuushina, abe
yakhaba nga yaba
yaariirakilemo
khakyeekhe.